

Powered by



Funded by the European Union's
Horizon 2020 Research and
Innovation Programme under
Grant Agreement no. 846463



This project has received funding from the European Union's Horizon 2020
research and innovation programme under grant agreement N° 892429



R-ACES BUILDING ECOREGIONS FROM BUSINESS PARKS

Peter Verboven



Why?

European Industry energy demand 25%
Only 16% comes from renewables
We need to **save energy!**

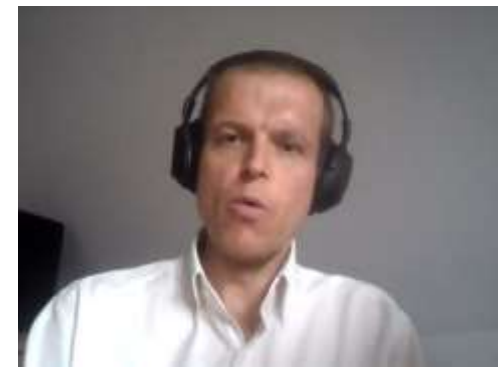


Energy Cooperation as a Solution



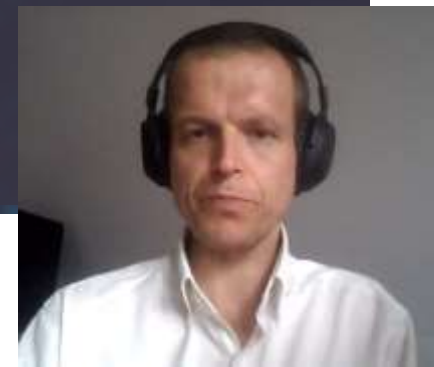
Industrial sites & business parks play a key role in the energy transition.

They have the potential to become hubs of energy flows for the entire region around them.



Vision of R-ACES

R-ACES supports industrial sites & business parks in becoming ecoregions that **reduce** their **CO₂ emissions** by at least 10%.



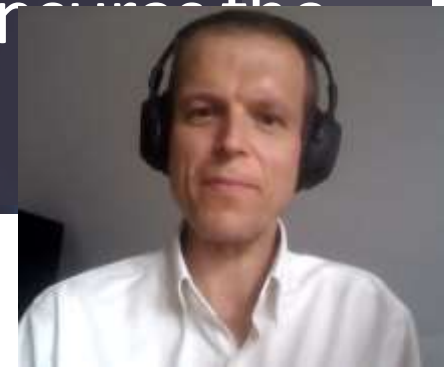
R-ACES Approach



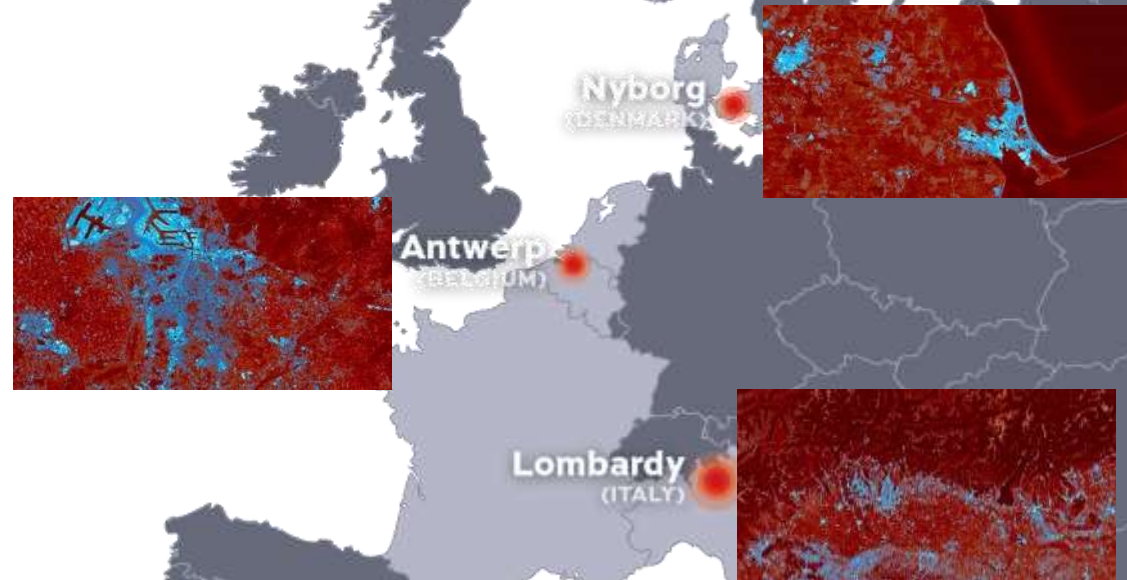
Ecoregion

Multiple organisations cooperate in an ecoregion to establish energy cooperation. Regions consist of an **industrial park** or **business park linked to its surroundings** by energy cooperation activities.

An ecoregion relies on an anchor organisation responsible for managing the area. The proximity of stakeholders ensures the interconnected energy flows.



Pilot Ecoregions





AALBORG UNIVERSITY
DENMARK

7th International Conference on Smart Energy Systems
21-22 September 2021
#SESAAU2021



R-ACES Tools

... to support the entire process of
organising an ecoregion & the
collaboration inside of it.



3 Practical Tools

... are the structuring element of the project. The tools are action oriented & **support ecoregions to implement their energy cooperation projects.**



The **self-assessment tool** to gauge the level of maturity at the start.



The **legal decision support tool** to help drawing up contracts that need to be signed between participants.



The **energy management platform** is the key to running, settling, and optimising the energy exchanges between companies.



Self-Assessment Score

—●— Actual —●— Max



International Conference on Smart Energy Systems

21-22 October 2021



Self-Assessment Tool

energy CLUSTER DENMARK

The tool helps to **identify potential** energy projects in a region. It provides **best practices & check lists** to users to help them to move from a project identification to a **project implementation phase.**





Legal Decision Support Tool

Practical & simple-to-use decision support tool for management to decide on the required framework for energy cooperation.

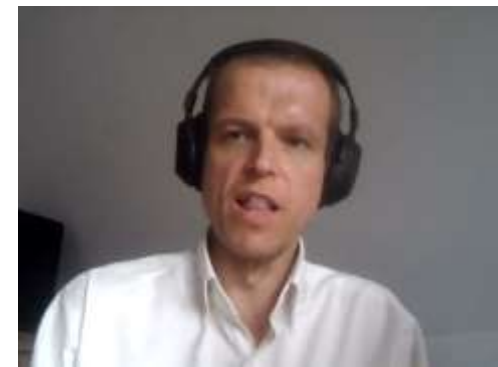




Energy Management Platform



ICT-tool that makes energy flows transparent, allows energy consumption & production to be allocated to specific installations, stakeholders & nodes, and identifies anomalies & opportunities.





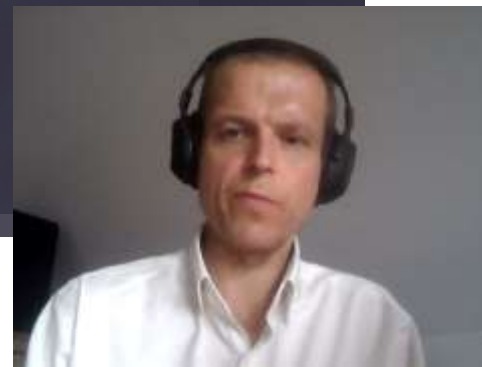
AALBORG UNIVERSITY
DENMARK

7th International Conference on Smart Energy Systems
21-22 September 2021
#SESAAU2021



R-ACES Training

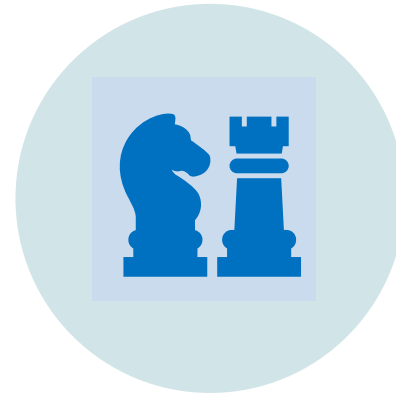
R-ACES creates an **online** education environment with links to available **training materials** to support capacity building of stakeholders.



Knowledge Hub



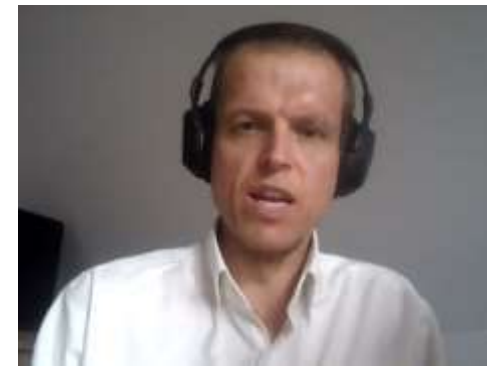
TRAINING MATERIALS



SERIOUS BOARD GAME

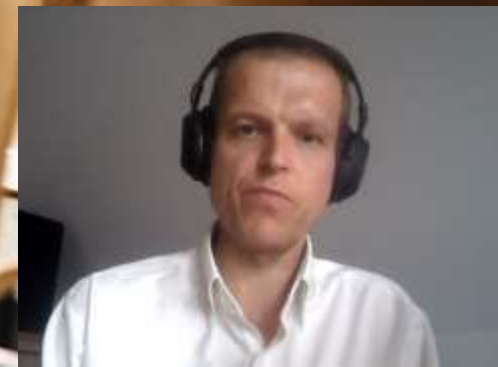


USE CASE LIBRARY



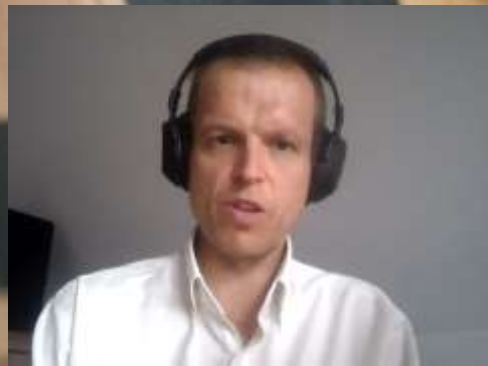
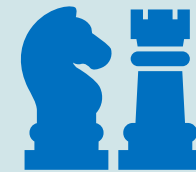
Training Materials

Compilation of various online course materials for energy cooperation consisting of webinars, presentations, reports and case studies.



Serious Board Game

Learning-through-experience presenting participants with a case study, in which they play pre-assigned roles to reach pre-defined objectives. Interactive & competitive gaming element increasing attractiveness & learning outcome of the case study.



Use Case Library

Collection of use cases for the various type of energy cooperations, various renewable technologies, various type of locations in the regions (DHC, exchange of surplus heat, upgrading DHC, implementing digital tools,...).





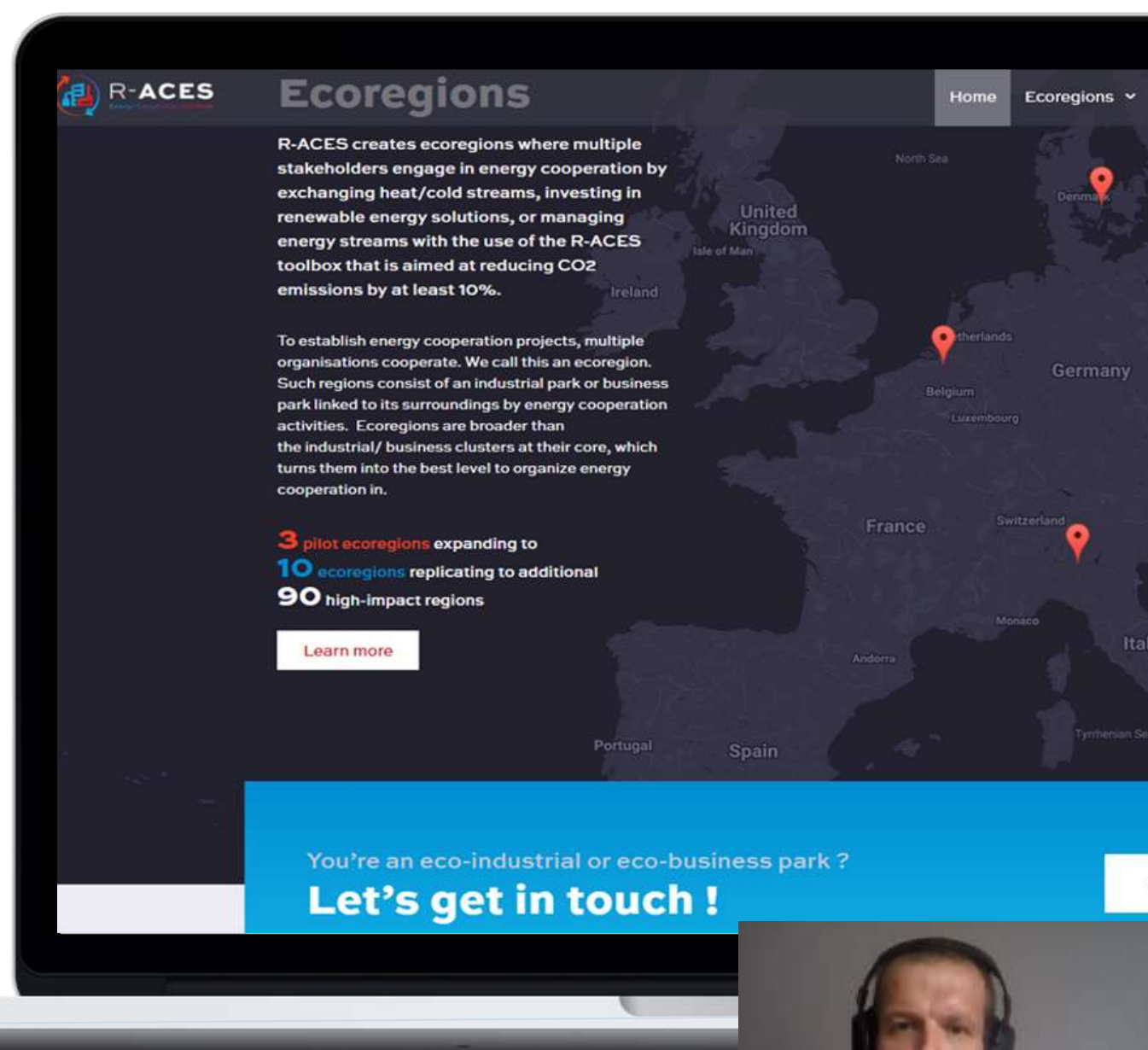
R-ACES

Energy Cooperation Platform

Follow us on :



www.r-aces.eu



Institute for Sustainable Process Technology



Condugo



energy CLUSTER DENMARK

