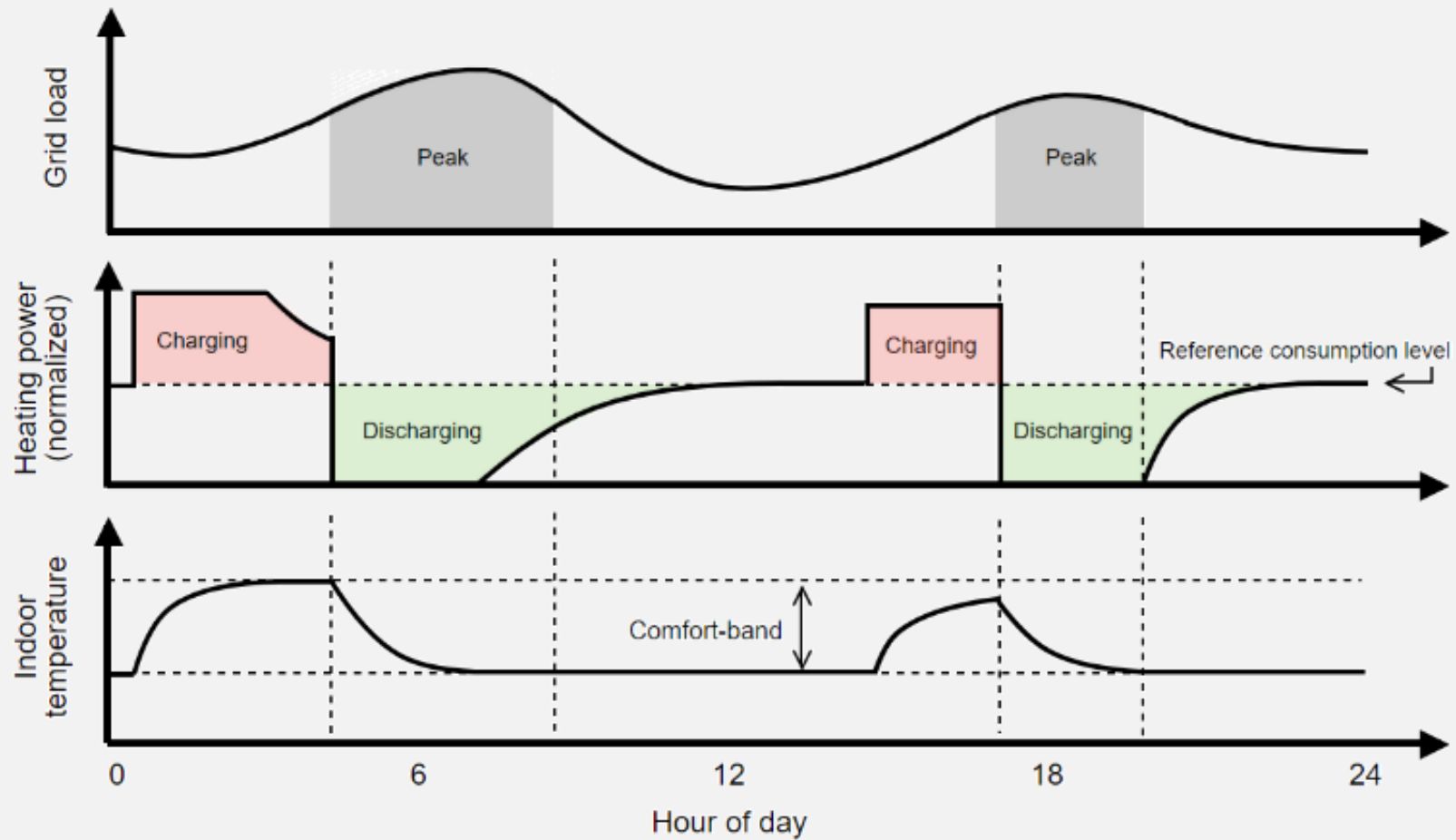
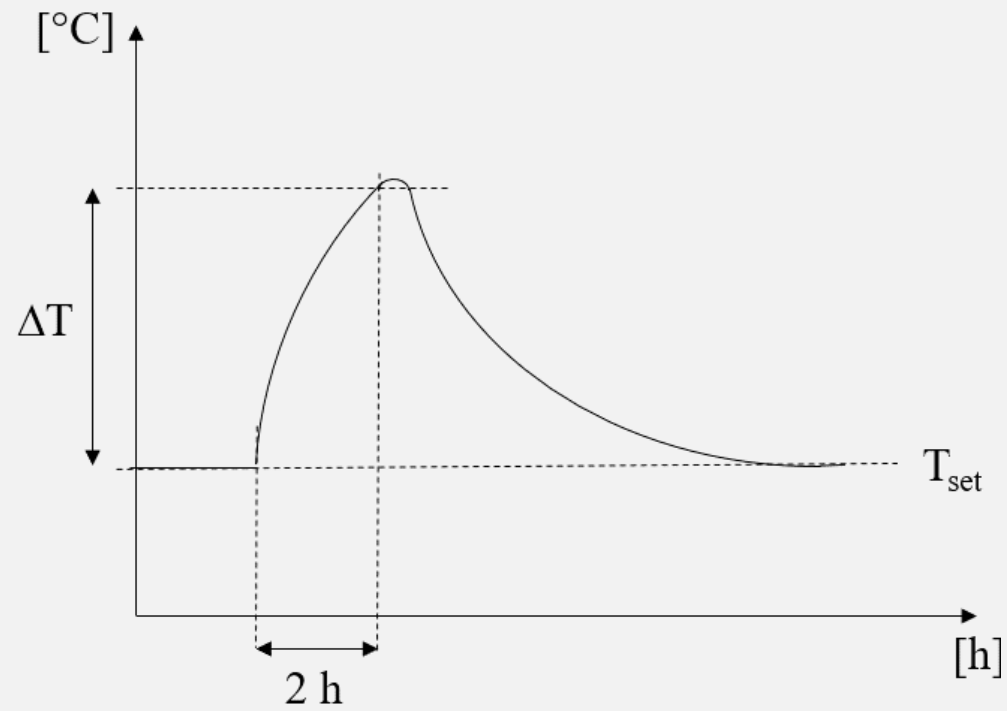


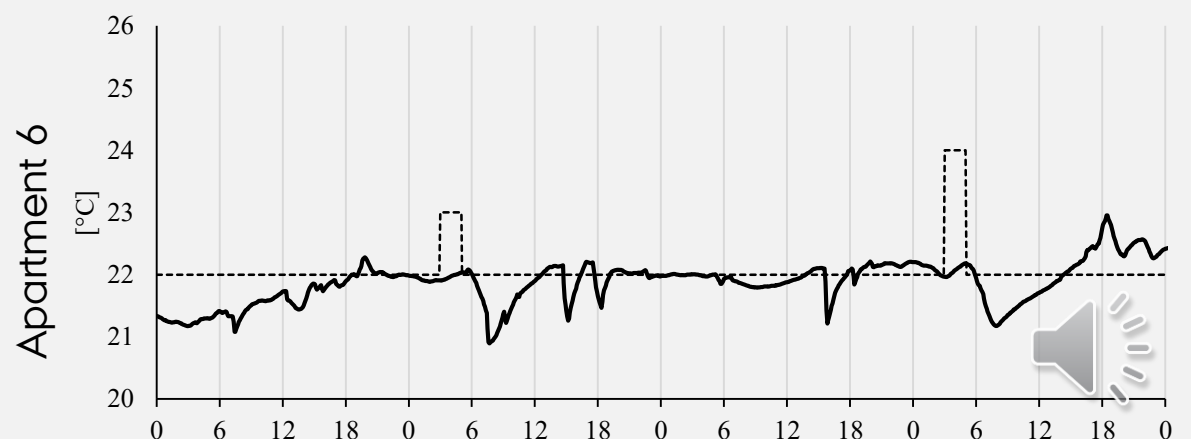
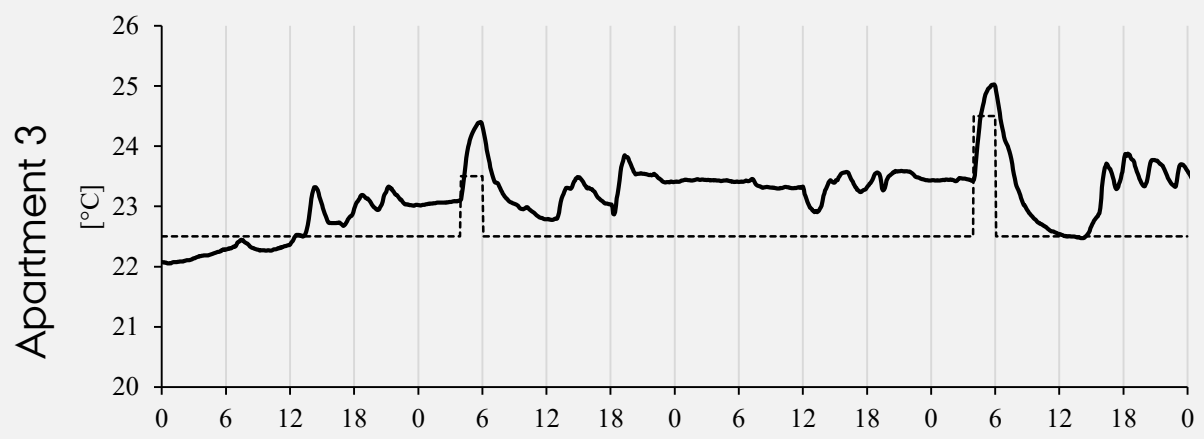
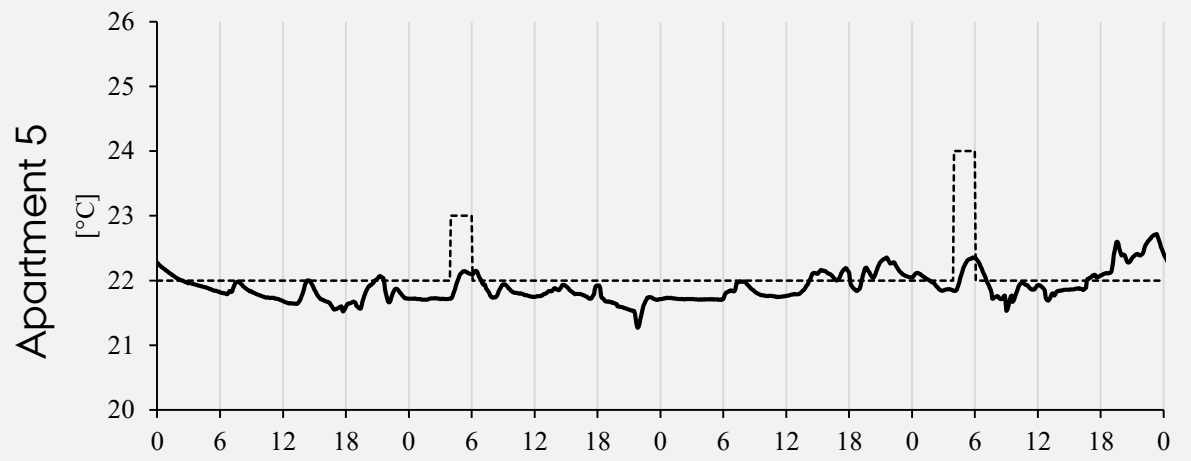
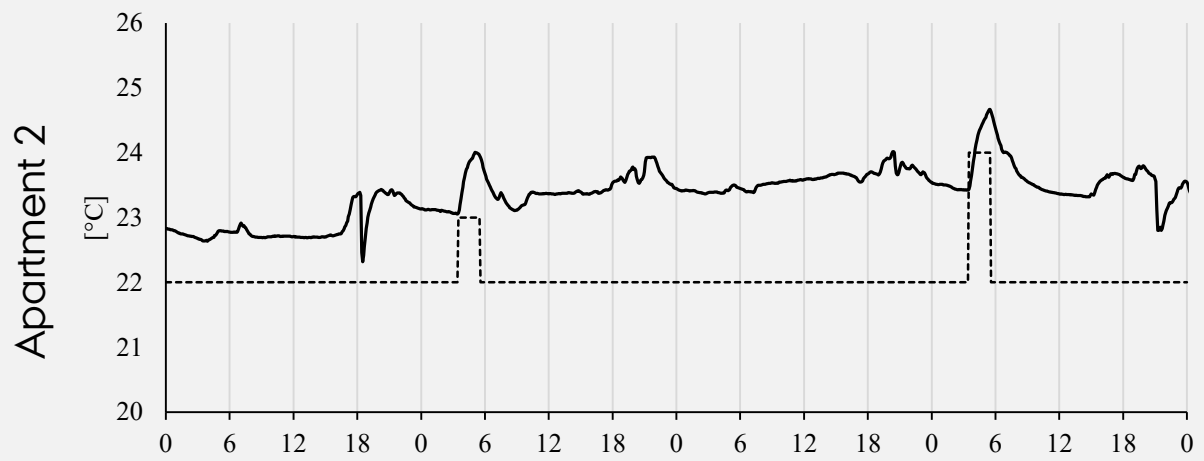
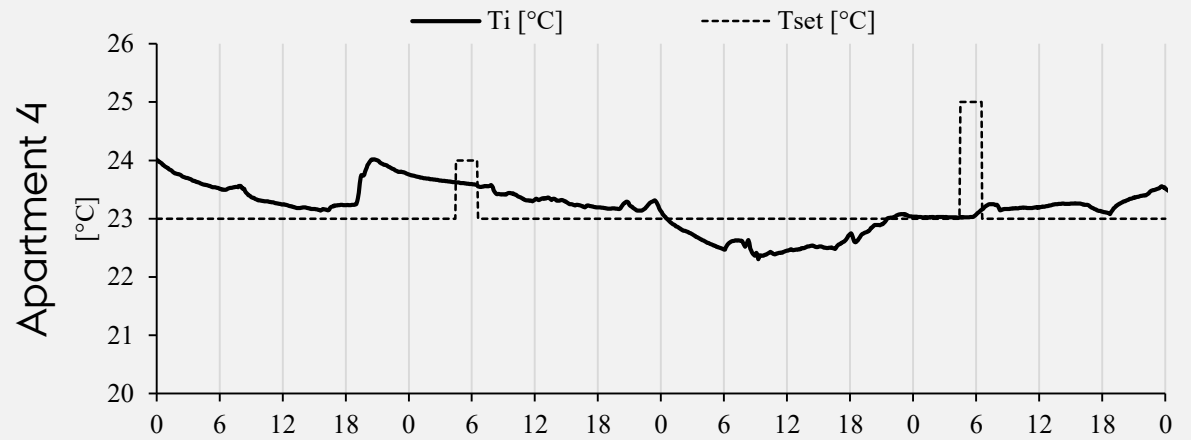
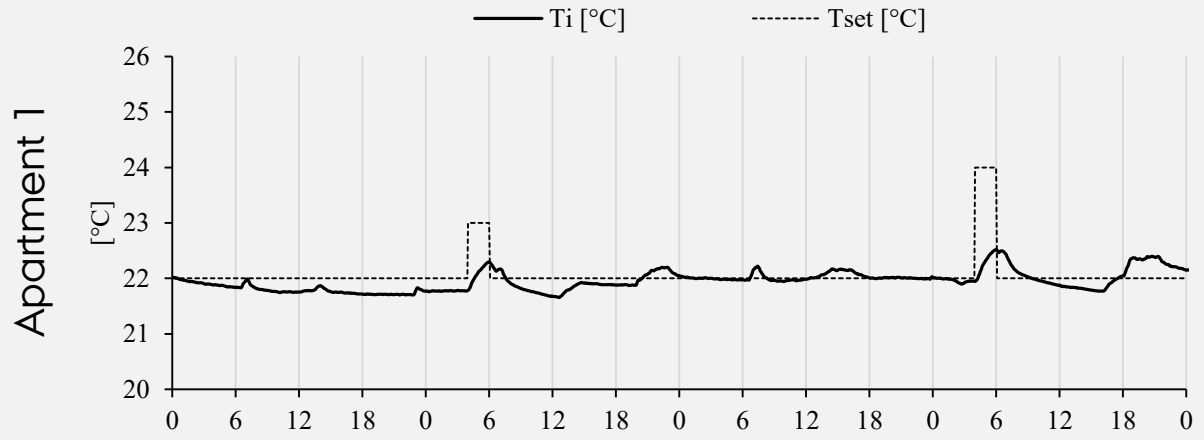


THERMAL COMFORT AND TECHNOLOGY ACCEPTANCE IN HOMES WITH DEMAND- RESPONSIVE CONTROL OF RADIATOR THERMOSTATS



- 1) Test control on available smart heating systems
- 2) Investigate user experience with smart heating system

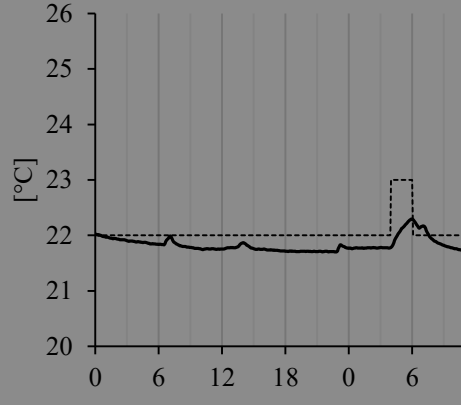




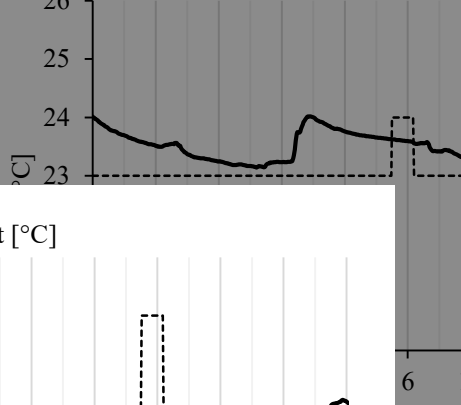
— Ti [°C] - - - - Tset [°C]

— Ti [°C] - - - - Tset [°C]

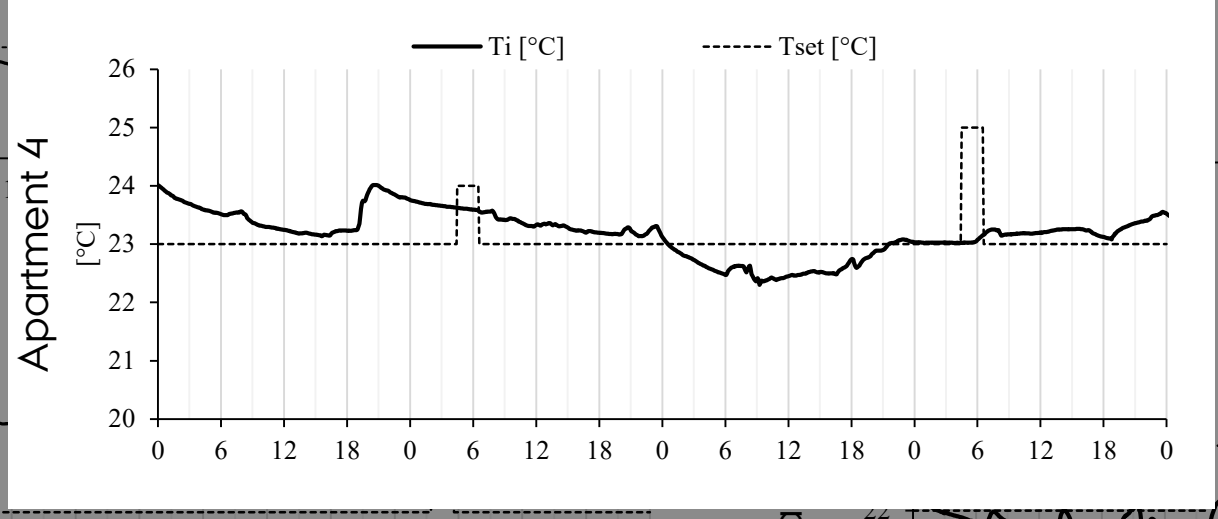
Apartment 1



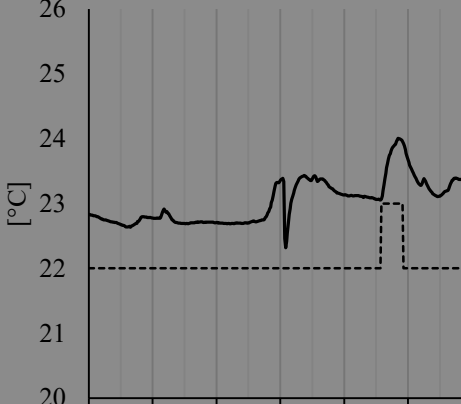
Apartment 4



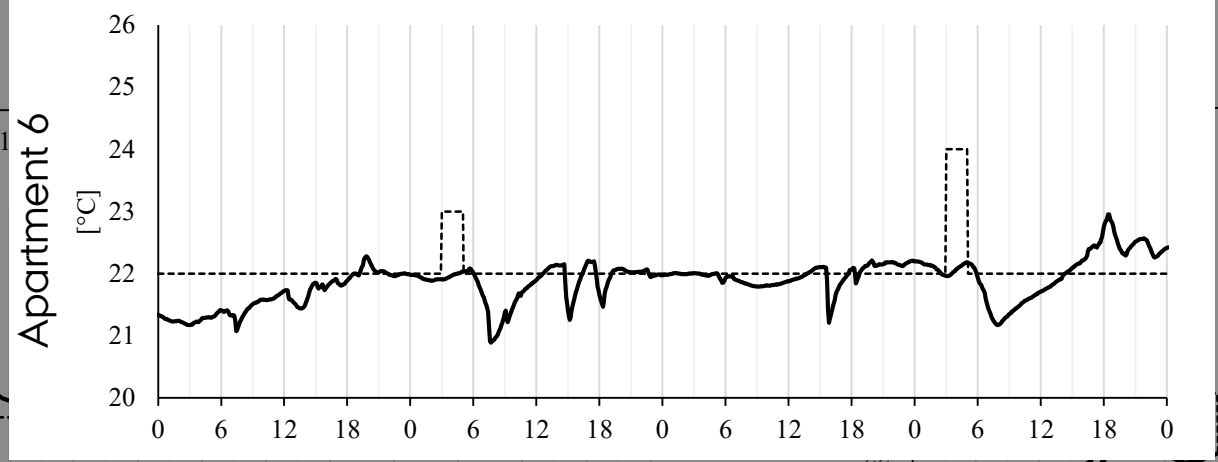
Apartment 4



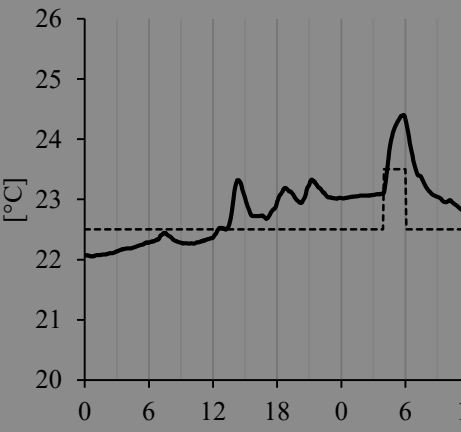
Apartment 2



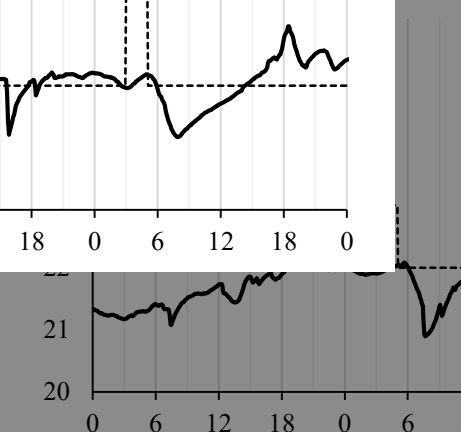
Apartment 6

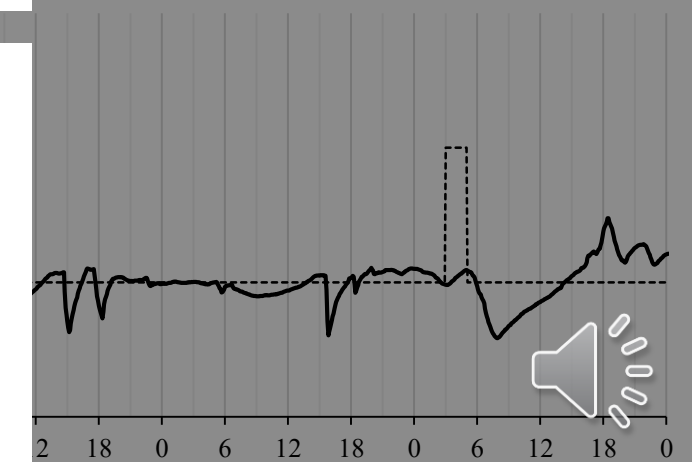
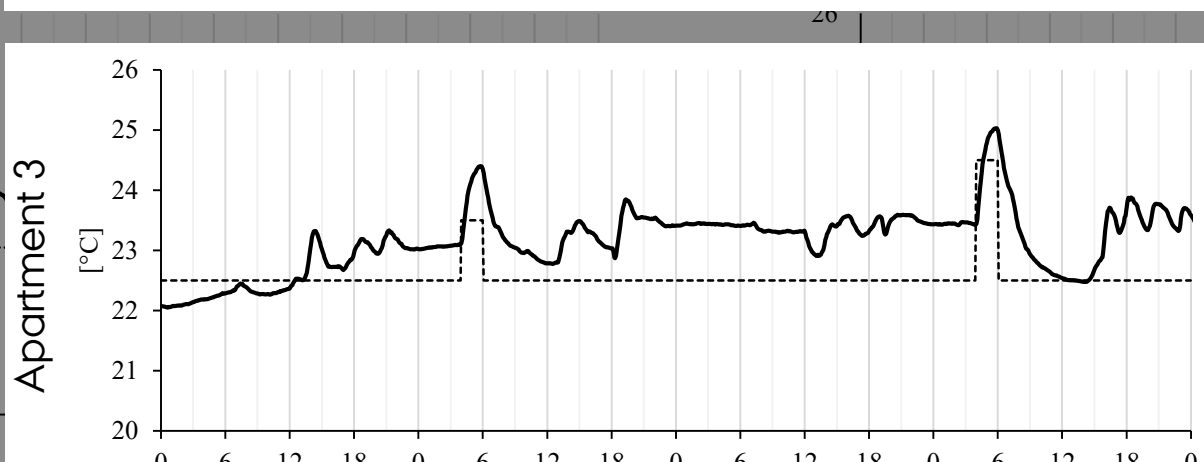
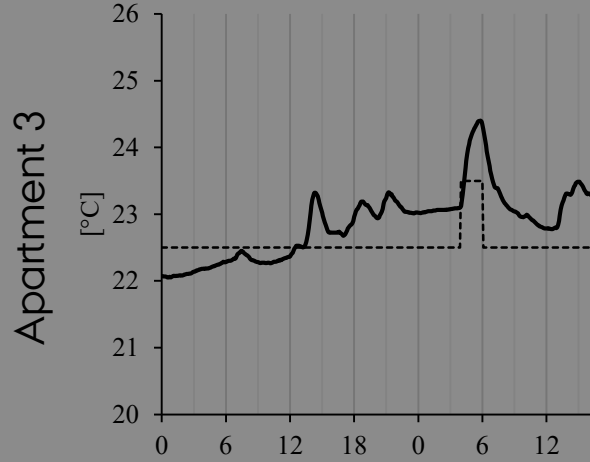
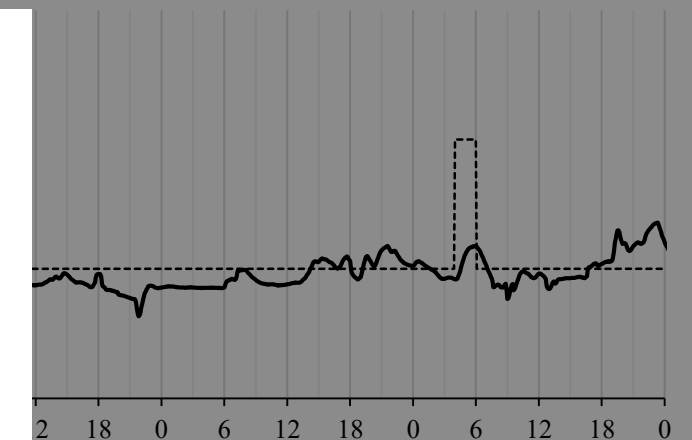
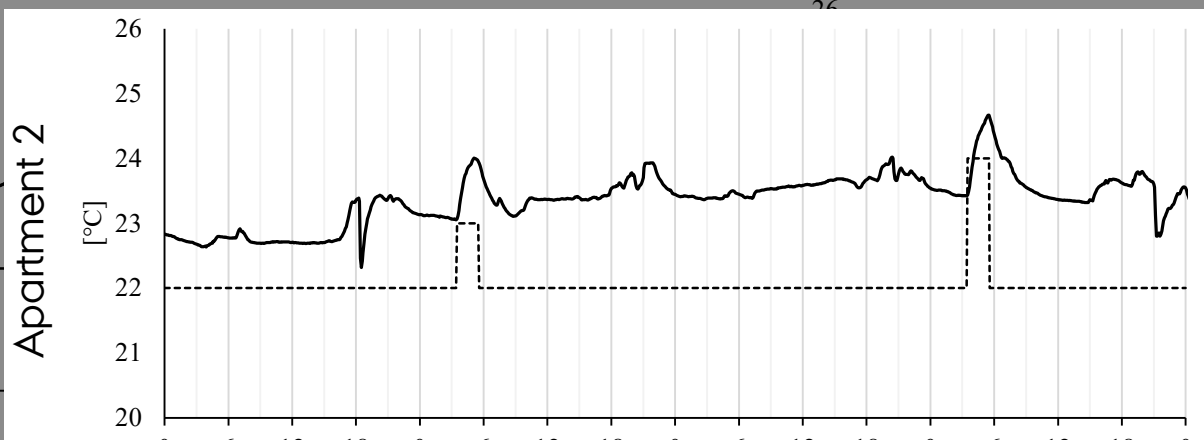
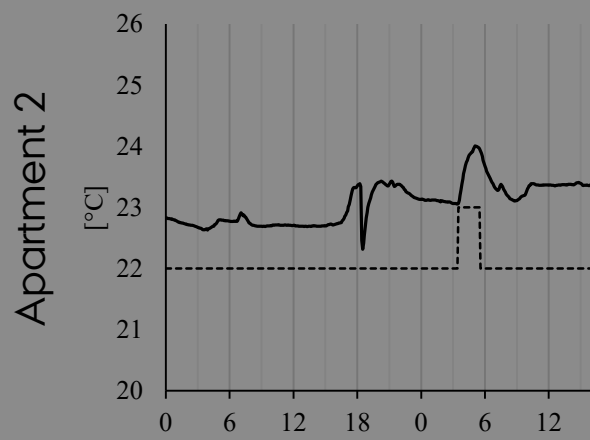
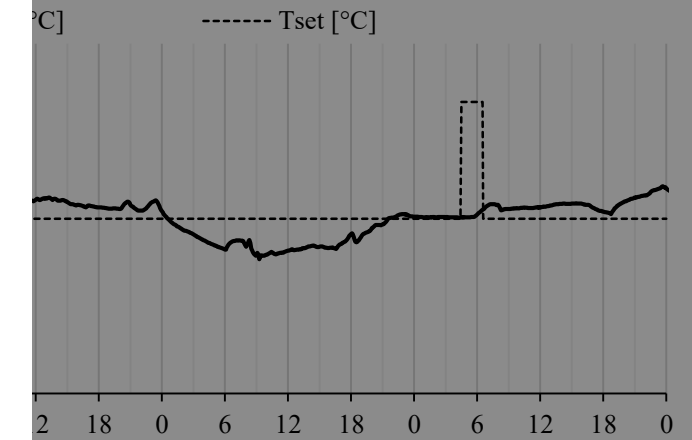
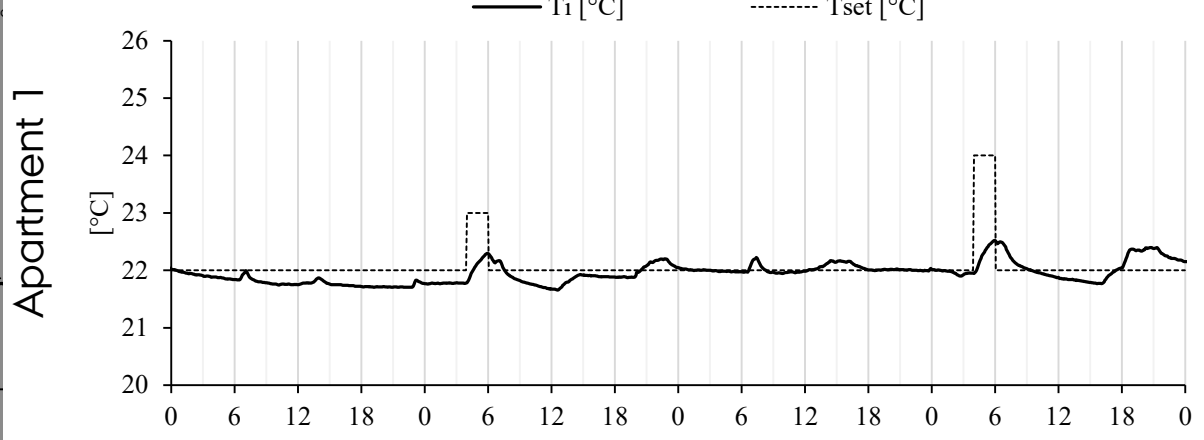
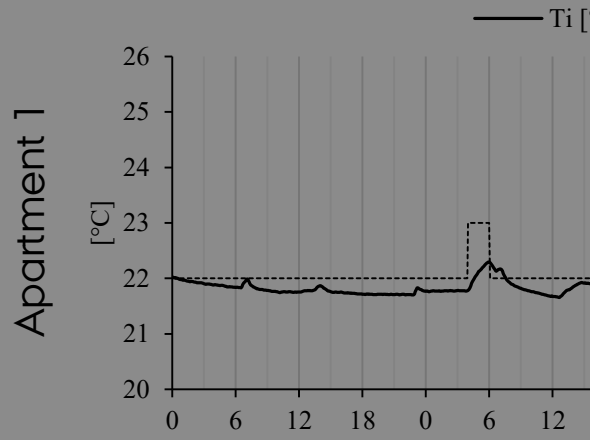


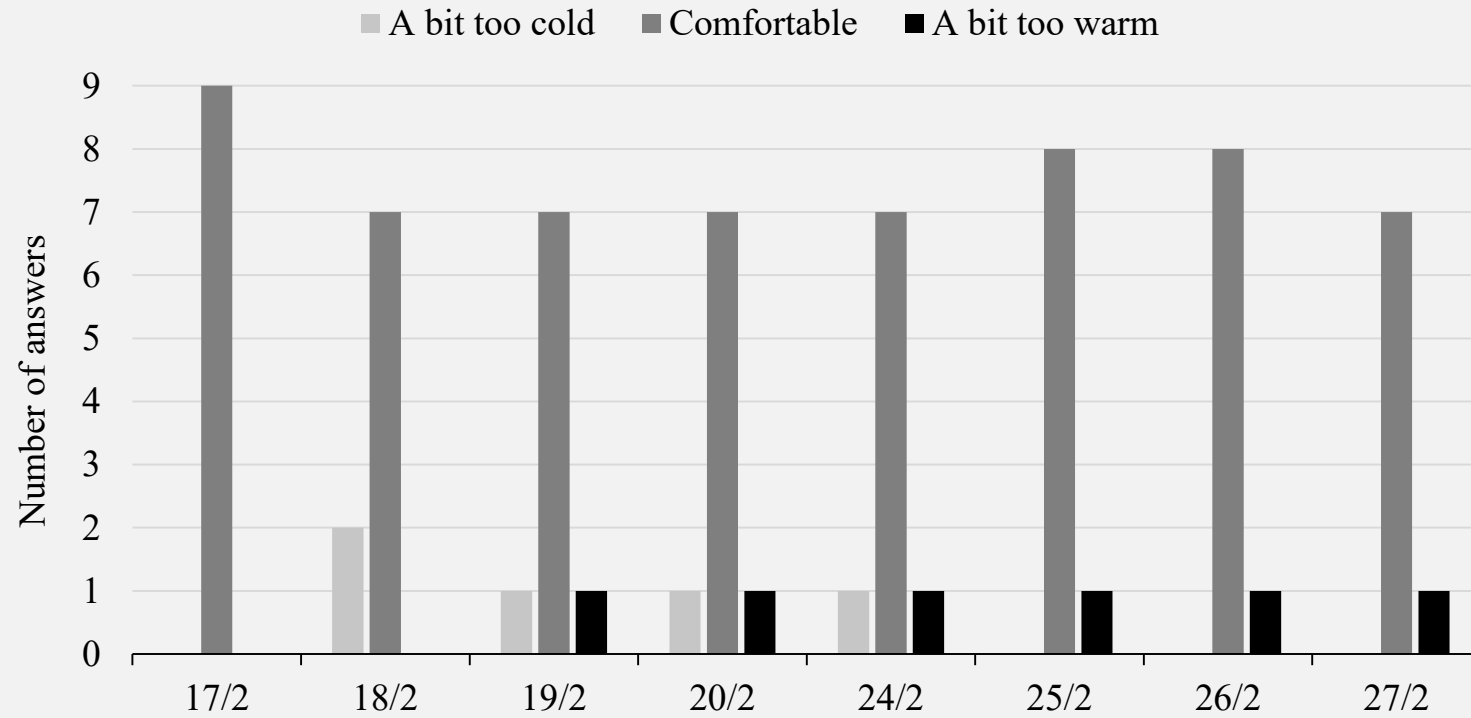
Apartment 3

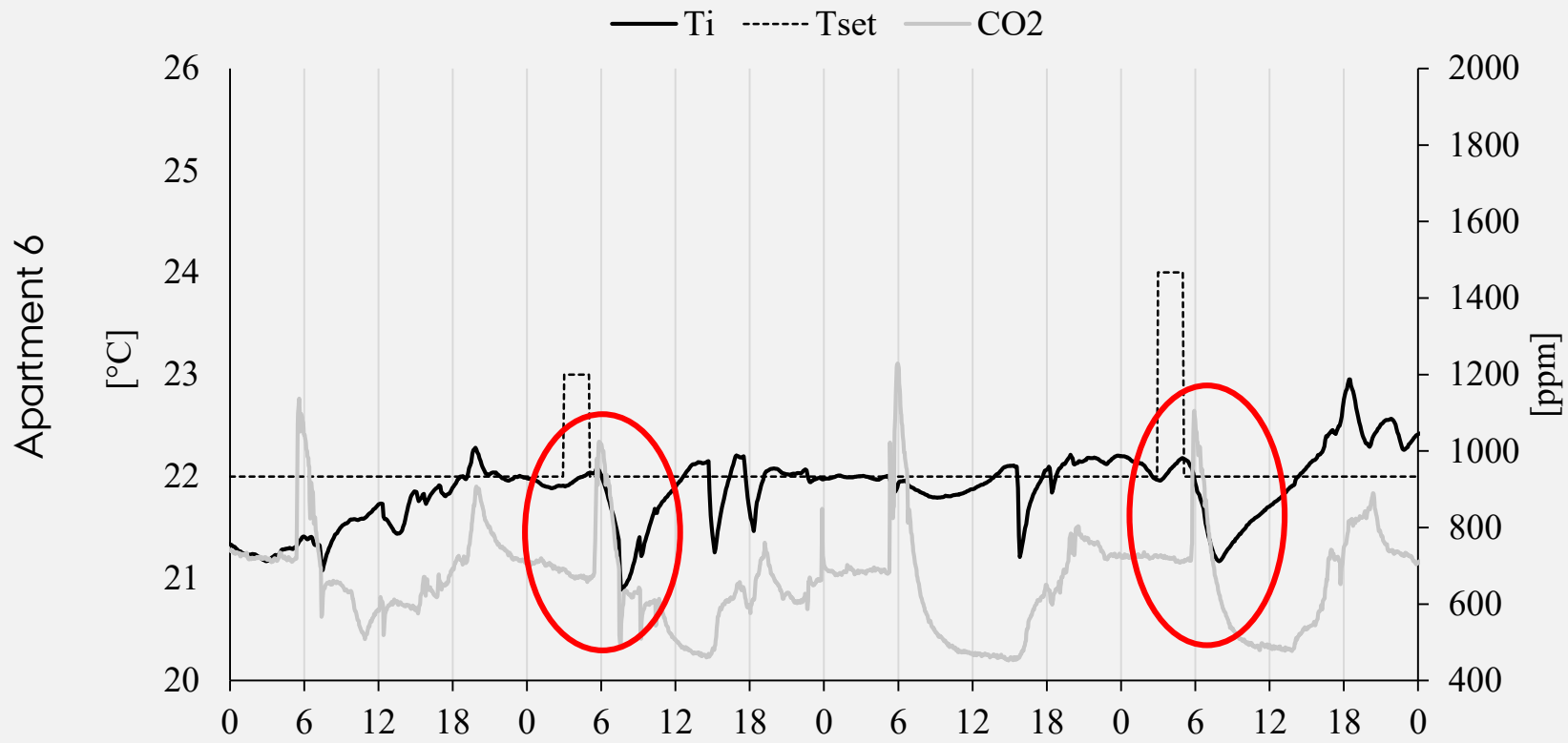


Apartment 5









THANK YOU

Louise Christensen
PhD student

 lch@eng.au.dk

 40 19 39 24



Steffen Petersen
Associate professor, supervisor

 stp@eng.au.dk



