

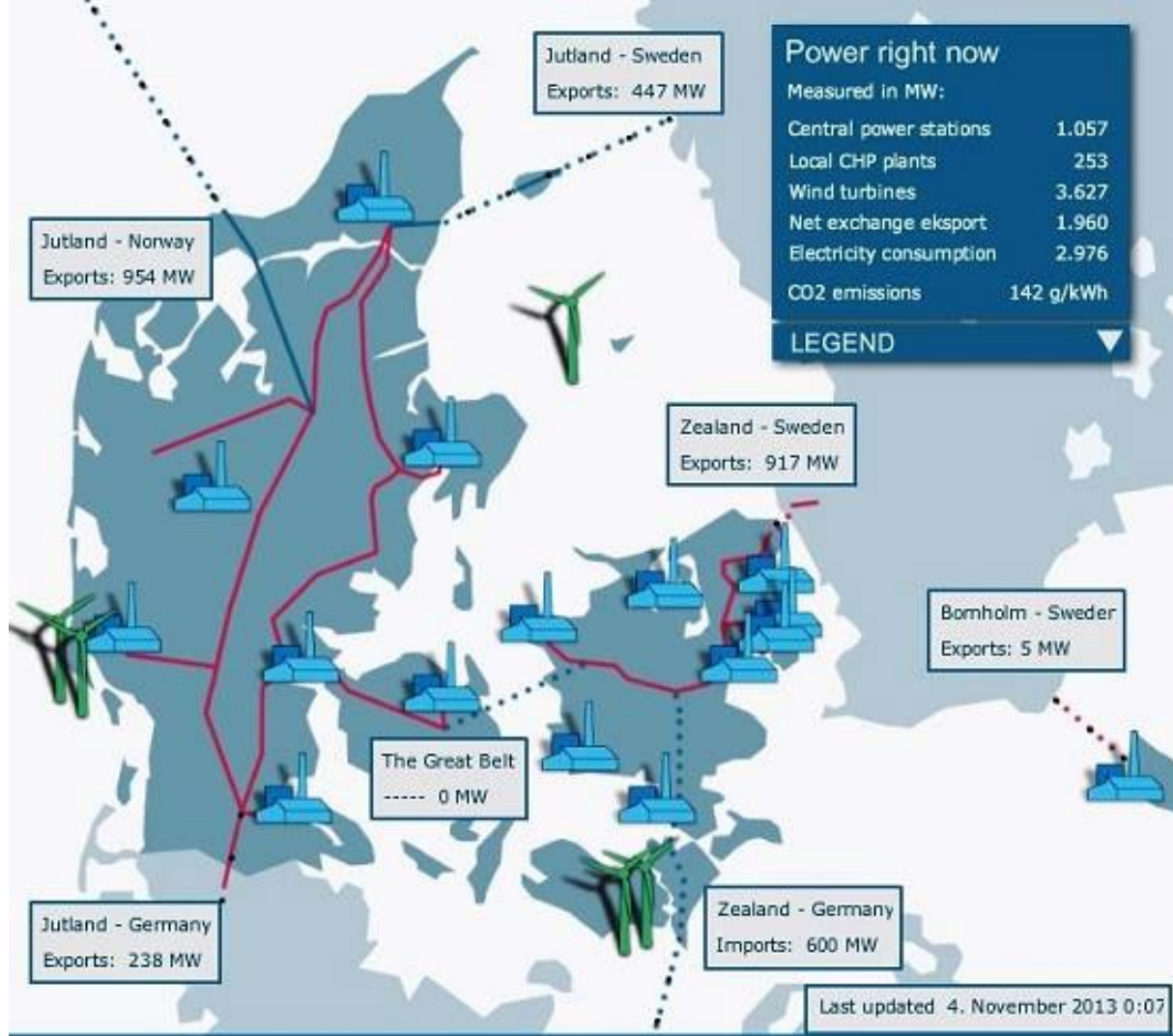
Samsø

A Community

Community = Common + community

A sustainable island?





Collaboration between sectors is a necessary condition for a successful sustainable transition.



Dialogue — At Samsø Energy Academy we mobilise the community and facilitate the ability of the community to carry out complex tasks in collaboration between the citizen, the administration and the private sector. Four examples of our work.

SAMSO: THE ENERGY SELF-SUFFICIENT ISLAND

The first island to become completely energy self-sufficient in 10 years?

11 ONSHORE WIND TURBINES

1 turbine generates enough electricity to power **630 houses**.

The turbines transmit electricity to the mainland when more electricity than the island can consume is generated.



OFFSHORE WIND TURBINES

10 103m high offshore wind turbines constructed in 2003 produce more energy than the island uses for transport



3 x STRAW FIRED PLANTS

- Tranebjerg
Heats **263** households
- Ballen / Brundy
Heats **232** households
- Onsbjerg
Heats **76** households

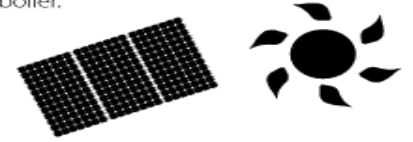


SAMSO: ISLAND FACTS

Area:	114 km ²
Population:	4,000
Investment:	DKK 368 million

SOLAR PLANT

One of the heating plants receives heat from **2500 m²** of solar panels. This is combined with a **900 KW** wood chip fired boiler.



EXCESS ENERGY

Excess electricity produced from offshore wind farms is invested in new energy projects.

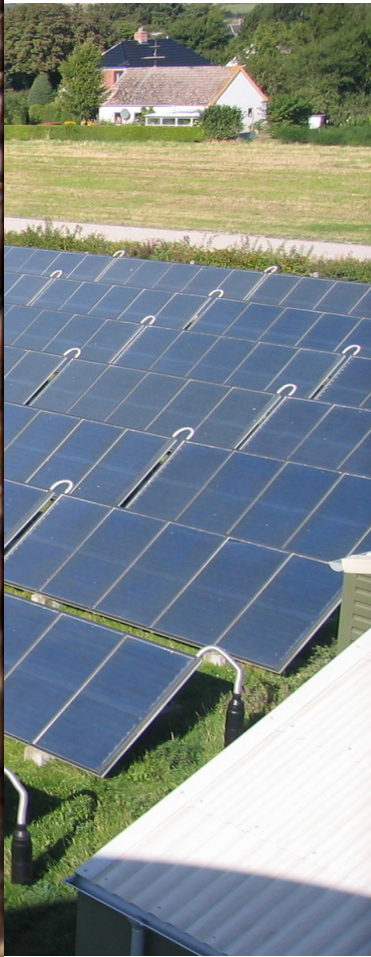


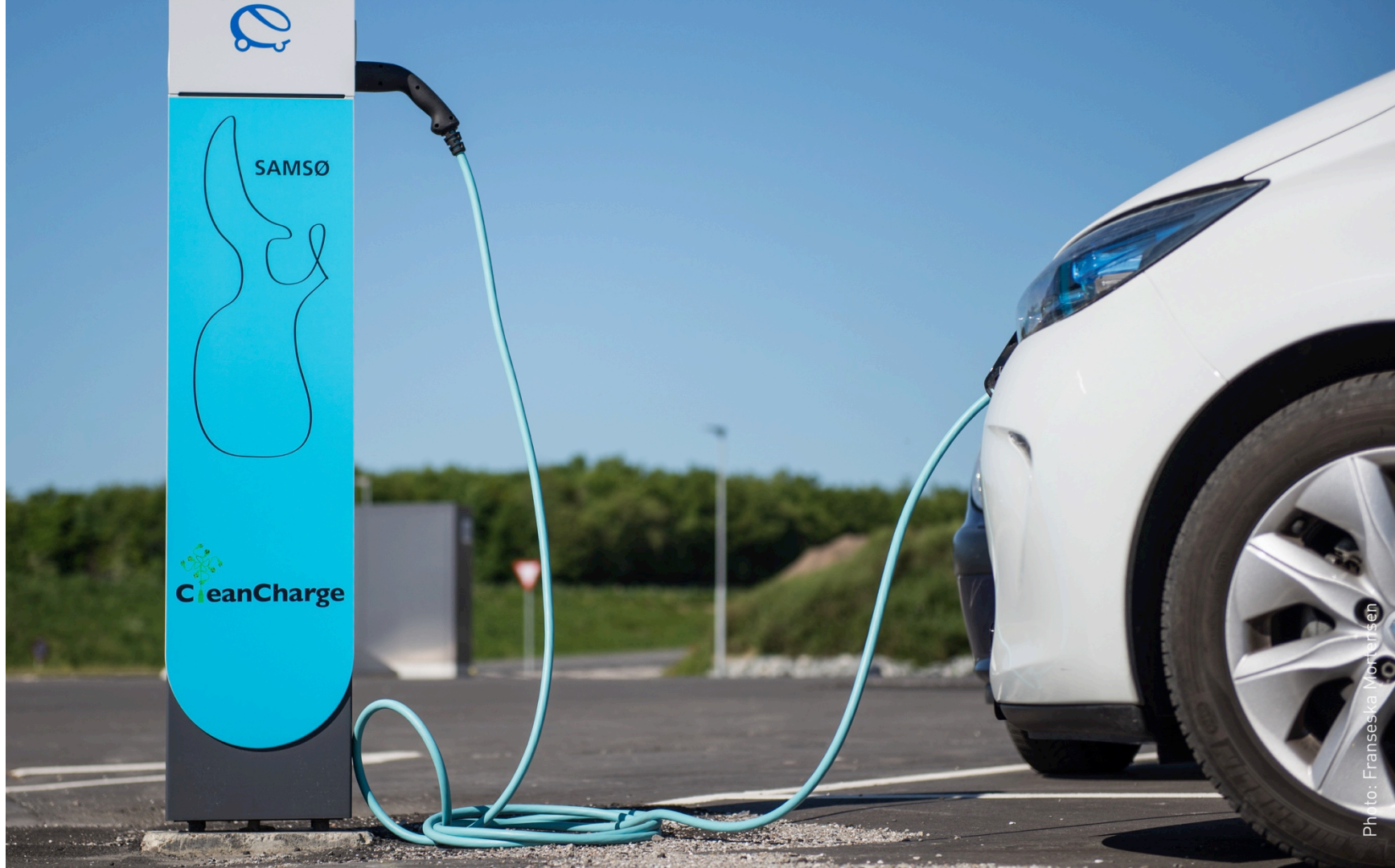
11 1MW onshore wind turbines

generate 28,000 MWh, that's more electricity than the island's total consumption and the equivalent of 690,000 gallons of oil.











sustainability

=

sustain-

+

ability

+

how do you define
yourself
?

INTRO

HERE — THE SIGNIFICANCE OF PLACE

**A strong,
sustainable
and robust
community
must share
locality, activity
and mentality!**

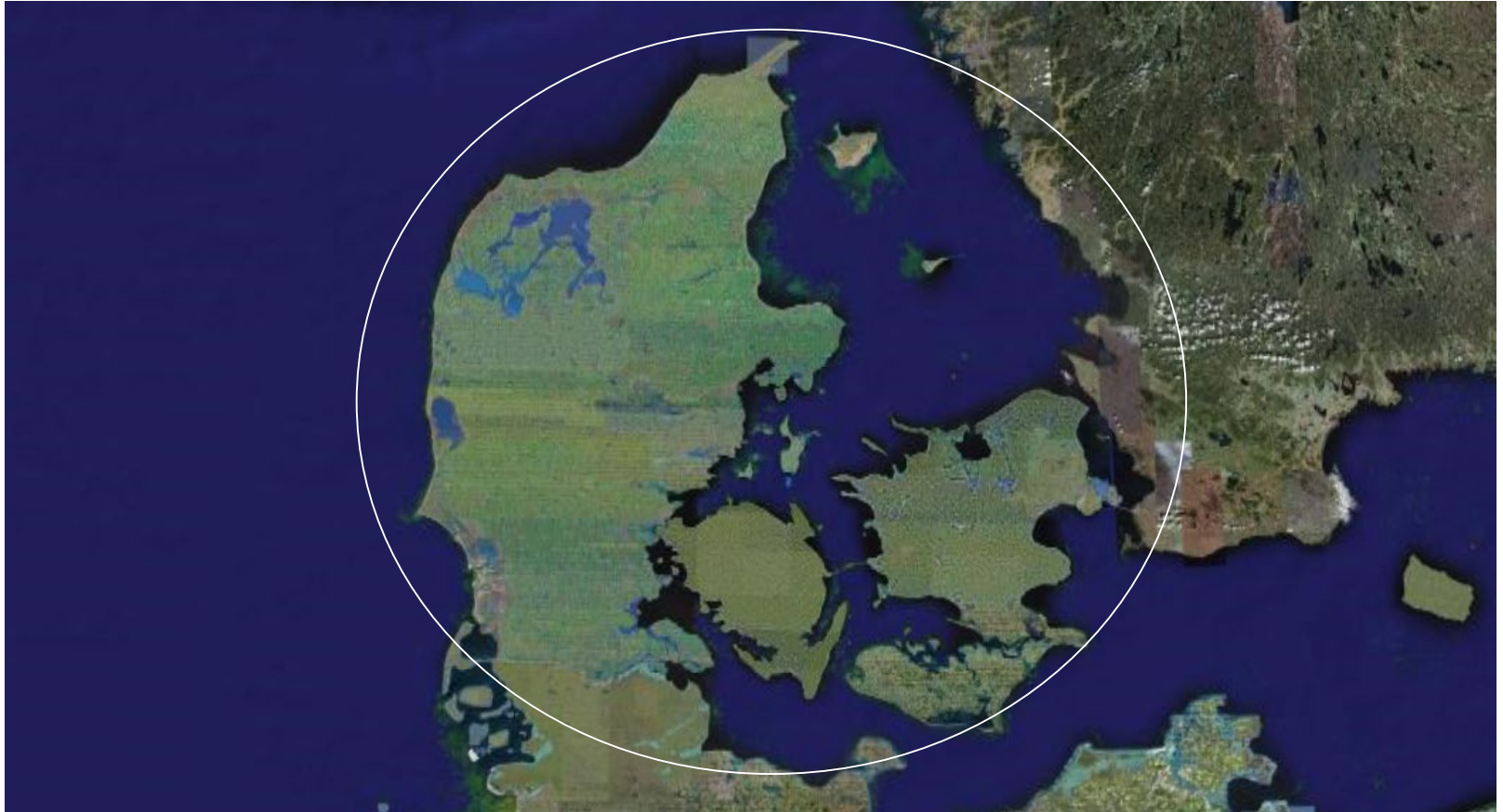


Intro — Getting started with transformation and change can be difficult, even if there is no shortage of good ideas and good will.

But local communities have the potential to become pioneer communities and open the way for change.



In the center of Denmark







common ground

different reason

**Power
without love
is coarse and
ruthless.
Love without
power is
sentimental.**



Reflection — Strong leadership is a vital component in any successful pioneer project. The paradox is that change is the work of love, but the driving force in the realisation is love walking hand in hand with power.



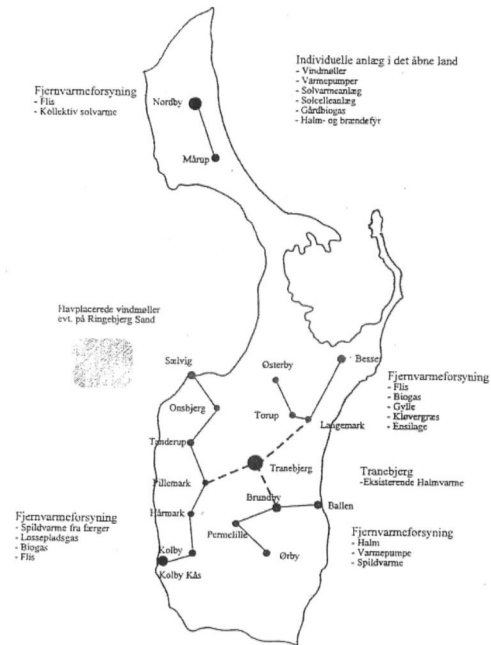
**When we
create a
common sense
of ownership,
the road is
open for
development.**

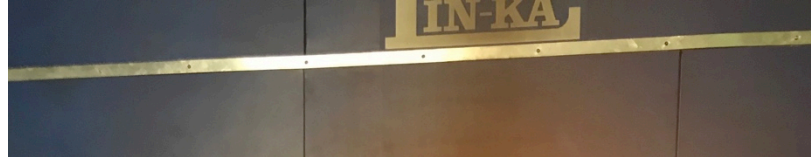


Dialogue — In order to realize a pioneer project the project participants must assume ownership of the project's main purpose. By creating ownership people accept a common vision for the future. Without ownership no united approach, and without a united approach no change can be created.

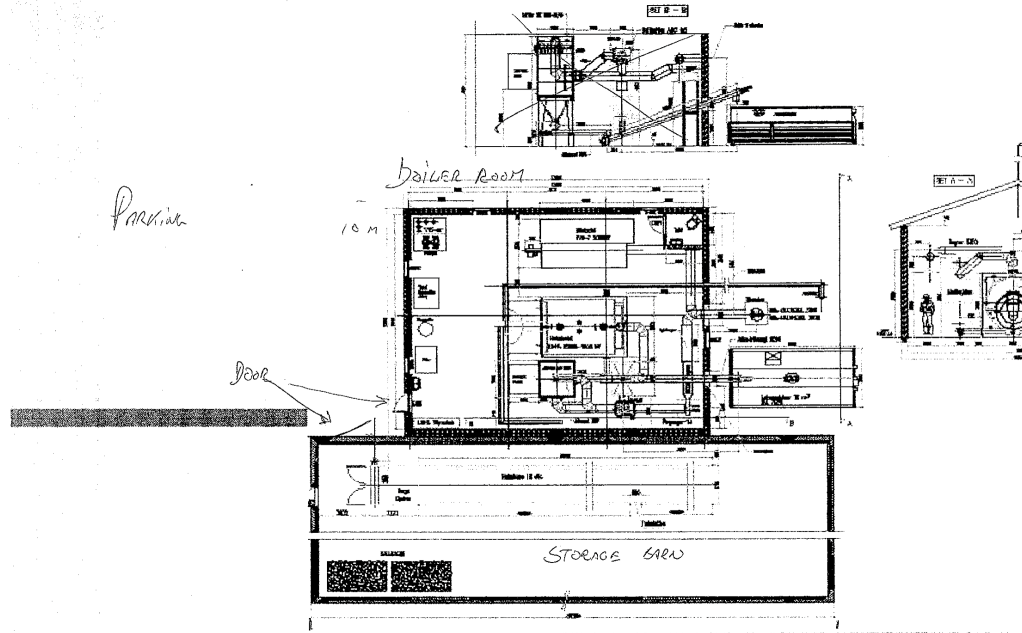


Samsø's Vedvarende Energiforsyning

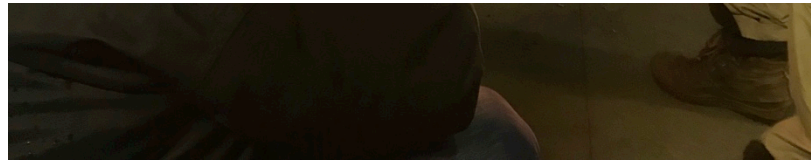




DISTRICT HEATING GARDEN/GRUNDBY



TEVNICH











Radical societal development calls for top-down and bottom-up to walk hand in hand.



Dialogue — The ambition of creating radical societal development, such as green transitions, requires national political frameworks and objectives which can facilitate a solid bottom-up integration process ultimately strengthening the local community.



If you want
to develop
and change it
is important
to meet
people where
they are.

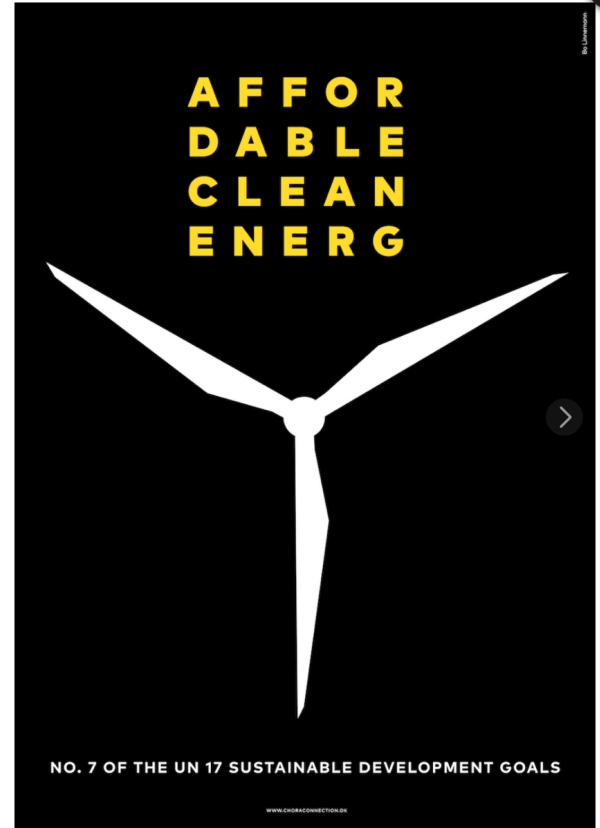


Dialogue — The most sensitive phase in all projects is the start-up. How is support secured? How to organize? How to secure the necessary participation of the local community? For pioneer projects in local communities a solution can be to build on the foundations already in place and for instance establish an association.



Our early considerations

- Will anyone invest in it?
- Who is going to own it?
- Who will take the profit?
- Who will take the risk?
- What is its impact on the environment?
- What's in it for the community?
- What's in it for me?







**An experiment
does not have
to be perfect
– experiments
can open the way
for something
radically new.**



Reflection — The ability to master the social innovation and the ability to create radically new solutions lies with the organization that knows how to handle the social experiment.

Find the
"blacksmith"

European smart islands network



**Creating new pathways
for EU islands**

28
March
2017 | European
Parliament

1 Signing
Ceremony

12 co-host
MEPs

300 Islands



Biogas 20/20

BioGas2020 



THE PROJECT

ACTIVITIES

NEWS

EVENT

PARTIES

CONTACT



SUSTAINABLE DEVELOPMENT OF BIOGAS

Together we create a Scandinavian Biogas platform

Biogas2020 working to Scandinavia will be the best in the world in the biogas - it contributes to a sustainable society and creates new jobs. To achieve this is our main goal to develop a Scandinavian platform where players can grow together.

[Read more](#)



Samsø gets the world's first biogas-ferry



09-10-2013 12:00:00



Samsø will be free of fossil fuels by 2030. The municipality has decided that the island's new ferry, SamsøFærgen, will be the first in the world to sail on biogas. It is part of the municipality's plan to be free of fossil fuels by 2030. Already in 2007, the island was self-sufficient in renewable energy.

"The special thing about it is that it will be the EU's first gas ferry. Initially, we'll be supplied on the gas from tank, id.asp?Id=17263&Titel=SamsøF8+gets+the+world%27s+first+biogas%2Dferry','540','420','0','1','1') en it becomes the world's first biogas ferry,





bread and butter





Samsø Energiakademi

www.energiakademiet.dk

www.pioneerguide.com